

# OREGON PARK WEST DEVELOPMENT PLAN



The Oregon Park District is currently in the process of planning improvements to Oregon Park West. Through the recommendations of our Strategic Plan, Master Plan, and local needs surveys the District has created the following Park West Development Plan.

The Oregon Park District is requesting your input concerning the Park West Development Plan. The District is currently pursuing grant opportunities to help fund the improvements. Through the course of the planning the District will develop a financial plan, through District budgeting and outside funding, to accomplish these goals.

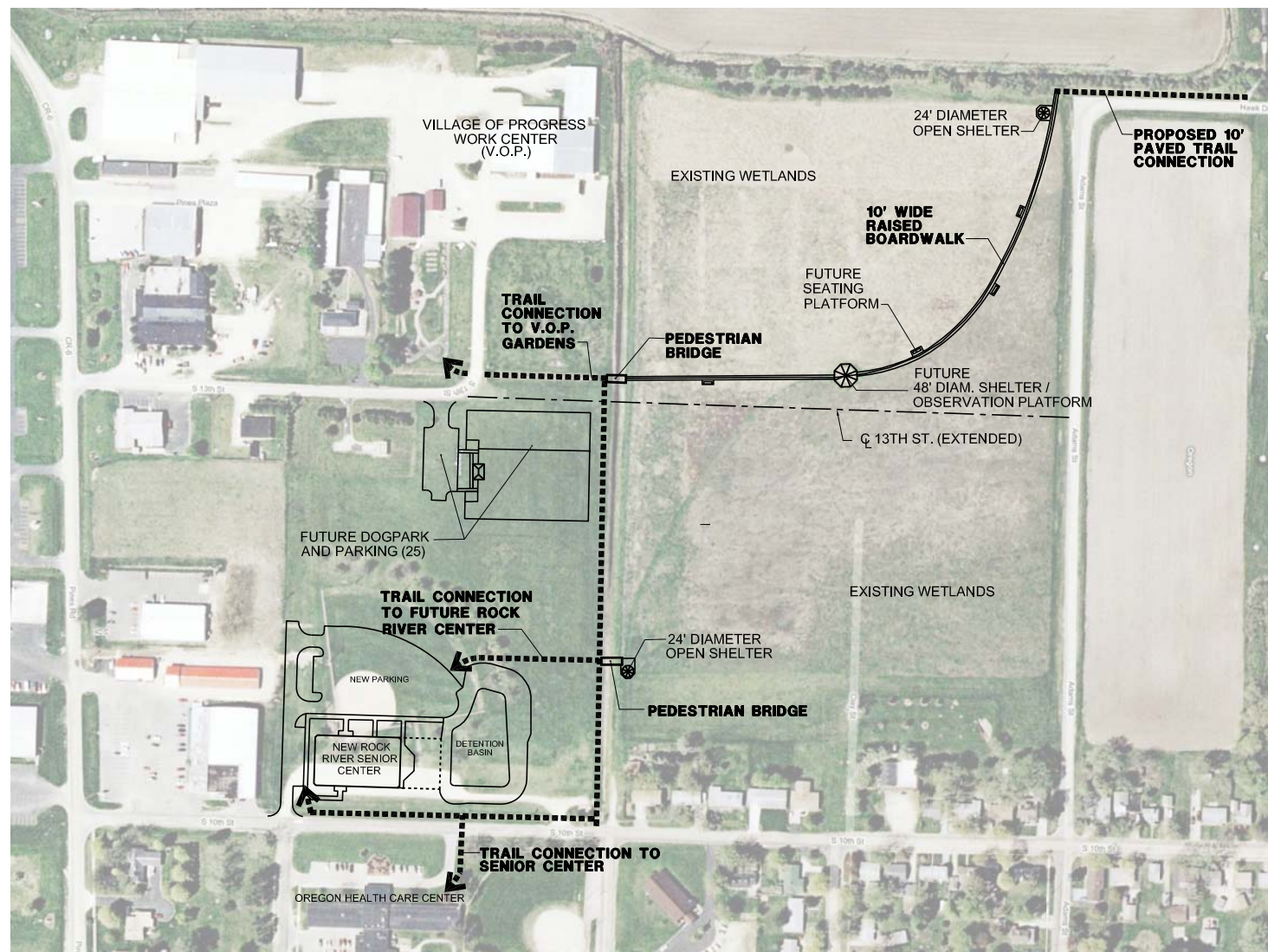
## Improvements Include

- Amphitheater Seating
- Baseball/Soccer Plazas
- Skate Park
- Spray Park (zero-depth)
- Basketball court replacement
- New Restrooms/Shelters
- Bio-Swale along drainage areas
- Trails Extension
- Elevated Board Walk through Wetland
- Batting Cages/Nets
- Entry Features/Signage

## Recommendations

- Prepare a Master Plan to guide the development of a sports complex to include soccer/ tennis/ volleyball/ baseball complex.
- Conduct a feasibility study to for the economic sustainability for an outdoor swimming pool
- Install District bike racks, recycling program, kiosk, signage
- Install trail connection to close trail loop
- Install batting cages
- Improve amphitheater seating and access
- Refer to Capital Improvement Plan and audits for ADA Compliance, Playground Safety, Architectural Maintenance

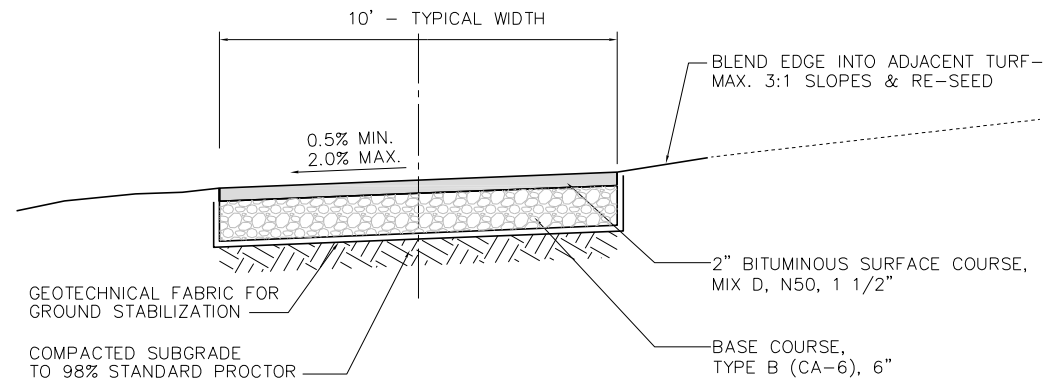




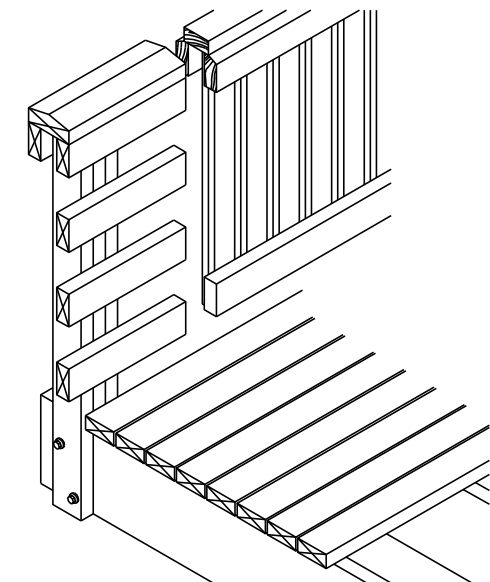
**SOUTH PARK DEVELOPMENT PLAN**



SEE SHEET 1 FOR NORTH PLAN



**TYPICAL BITUMINOUS TRAIL SECTION**  
NOT TO SCALE



- PILINGS AND POST SYSTEM TO BE DESIGNED BASED ON FIELD CONDITIONS.
- TREATED LUMBER THROUGHOUT.
- GALVANIZED FASTENERS AND PLATES.
- 4" RAILING SPACING TO MEET CODES.
- 2" X 6" X 5/4" WOOD DECKING.

**TYPICAL BOARDWALK SECTION / ELEVATION**  
NOT TO SCALE

**THE FOLLOWING IMPROVEMENTS ARE INCLUDED IN THIS GRANT APPLICATION:**

**SHEET #1:**

1. NEW SPRAY PARK NORTH OF BASEBALL FIELDS.
2. NEW SKATE PARK WEST OF BASEBALL FIELDS.
3. BIO-SWALES AND RETENTION PONDS ALONG EAST SIDE CREEK.
4. PAVED TRAIL EXTENSION THROUGH EAST TREE LINE.

**SHEET #2**

1. PAVED TRAIL CONNECTIONS TO HAWK PRAIRIE BOARDWALK, V.O.P. WORK CENTER AND ROCK RIVER SENIOR CENTER.
2. BOARDWALK CONNECTION THROUGH HAWK PRAIRIE.

ALL OTHER IMPROVEMENTS SHOWN ARE FUTURE DEVELOPMENTS.

**PHASE 1 IMPROVEMENTS (THIS GRANT APPLICATION)**



**TYPICAL BIO-SWALE ALONG CREEK**

**POTENTIAL BIO-SWALE SPECIES:**

**WET PRAIRIE**

- Canada Bluejoint Grass
- Common Fox Sedge
- Porcupine Sedge
- Cord Grass
- Marsh Milkweed
- New England Aster
- Sawtooth Sunflower
- Blue Flag
- Gay Feather
- Winged Loosestrife
- Golden Alexander

**MESIC PRAIRIE**

- Canada Wild Rye
- Indian Grass
- Smooth Aster
- Cream Wild Indigo
- Shooting Star
- Black-eyed Susan
- Rosin Weed

SOURCE: PARK DISTRICT OF HIGHLAND PARK

**AECOM**

111 N.E. Jefferson Ave.  
Peoria, Illinois 61602  
309-676-8464  
www.aecom.com

Copyright 2009 © by: AECOM  
A Design Firm Reg. No.  
AECOM USA, Inc.  
184-003706  
AECOM Technical Services  
184-000178

OREGON PARK DISTRICT  
304 S. 5th Street  
Oregon, IL 61061-0237

PARK WEST IMPROVEMENTS  
SOUTH SECTION  
DEVELOPMENT CONCEPT

Issued

Rev	Date	Description

Designed: JRA 06/22/2009  
Drawn: JRA 06/23/2009  
Checked:  
Approved:

PROJECT NUMBER  
**60098885**

SHEET REFERENCE NUMBER

S:\PROJECTS\06098885\DWG\100\_PARK\_WEST\_GRANT\OREGON-2-FINAL.DWG